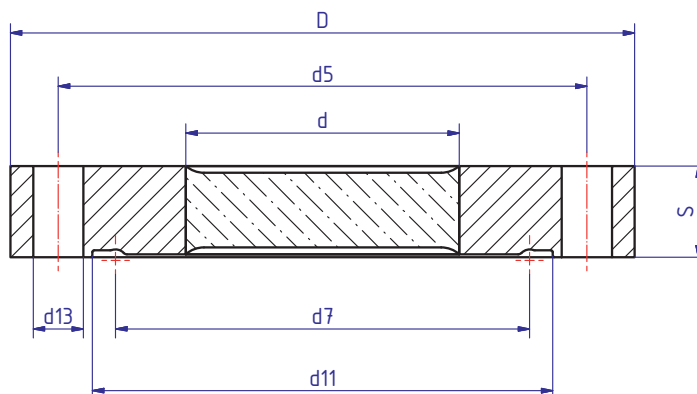
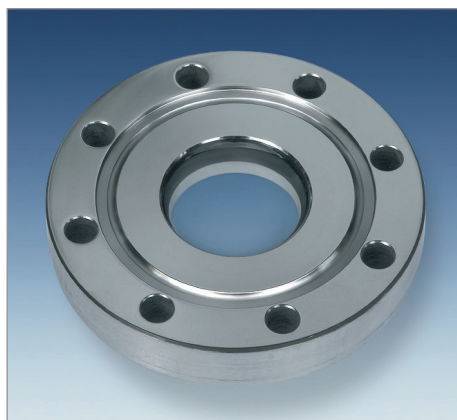


**Type 84.BF**

METAGLAS® Sight glass for aseptic flanged pipe connection DIN 11864-2  
(flange with notch)



**Applications**

- Sterile fitting to DIN 11864-2 form A
- Aseptic flange with notch for installation on aseptic flange with groove

**Material certificates**

- Certificate of conformity EN 10204-3.1 or 3.2

**Ring**

materials	Temperature (TS)
1.4462	-30°C bis +280°C
2.4602	-60°C bis +300°C
2.4610	-60°C bis +300°C

**Technical data Manufactured and tested to:**

- Directive for pressure equipment 2014/68/EU, Module H (DIN/EN(ISO 9001))
- AD 2000 Standards W0/TRD 100
- Sight glass fused to metal conforming to DIN 7079
- Materials to VdTÜV specifications and the DIN/EN designated standards
- Glass: Borosilicate to DIN7080 / DIN7079

**Advantages**

- Sight glass and sealing profile correspond to EHEDG (European Hygienic Equipment Design Group) and ASME-BPE (Bioprocessing Equipment)
- Security against total fail
- Long operating time
- Suitable for CIP and SIP cleaning
- complies with GMP for clean condition, cleaning, sterilization

Nominal size DN			max. operating pressure [bar]	D	d	d7	d5	d11	d13	S	O-Ring
Series A DIN 11850	Series B ISO 1127	Series C ISO 2037 BS 4825									
40	–	–	16	82	35	44,56	65	53,7	4 x Ø9	14	40 x 5
–	42,4	–	16	82	35	44,96	65	54,1	4 x Ø9	14	40,5 x 5
–	48,3	–	16	88	35	50,86	71	60,0	4 x Ø9	14	46,5 x 5
–	–	2"	16	92	35	54,36	75	63,5	4 x Ø9	14	50 x 5
50	–	–	16	94	40	56,56	77	65,7	4 x Ø9	16,3	52 x 5
–	60,3	–	16	103	40	62,86	85	72,0	4 x Ø9	16	58,5 x 5
–	–	2½"	16	107	45	66,76	89	75,9	8 x Ø9	18	62 x 5
65	–	–	16	113	45	72,56	95	81,7	8 x Ø9	16	68 x 5
–	76,1	–	16	125	50	78,26	104	88,4	8 x Ø11	20	73,5 x 5
–	–	3"	16	125	50	79,46	104	89,6	8 x Ø11	20	75 x 5
80	–	–	16	133	55	87,56	112	97,7	8 x Ø11	20,26	83 x 5
–	88,9	–	16	137	60	90,86	116	101,0	8 x Ø11	20	86,5 x 5
–	–	4"	10	157	70	103,96	135	114,4	8 x Ø11	22,5	100 x 5
100	–	–	10	159	65	106,56	137	116,7	8 x Ø11	24	102 x 5
–	114,3	–	10	168	70	115,81	146	125,9	8 x Ø11	24	111 x 5
125	–	–	10	183	75	131,56	161	141,7	8 x Ø11	22	127 x 5
150	–	–	10	213	90	156,56	188	167,7	8 x Ø14	26	152 x 5