

Full View Visual Flow Indicator

Designed for Sterile Service

Data Sheet VB2.01

- Full 360° view for high purity sterile applications
- Unique O-Ring Seal minimises bug traps
- FDA compliant materials
- Sterilisable & autoclavable
- Sanitary Clamp & Orbital Weld Connections
- Spacers between heads make over-tightening of glass impossible
- Impact resistant stainless steel mesh shield available



Benefits:

Visilume's Sterile Visual Flow Indicator offers easy cleaning, validation and sterilisation so it is ideal for biotech and pharmaceutical applications.

The unique o-ring sealing design offers the smoothest internal bore available with minimal bug traps.

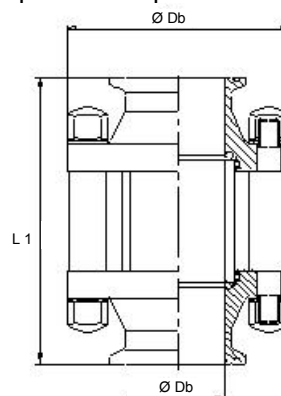
Polished stainless steel connections include sanitary clamps & orbital weld as standard

Construction:

- Standard Product contact surface Ra<0.6µm electropolished. Ra<0.1µm available
- Borosilicate Glass
- Stainless Steel 316L & connections Hastelloy also available
- Standard seals are EPDM Silicone, Viton and FEP encapsulated silicone also available
- Sizes from 3/8" to 8"
- Custom designs & lengths available

Operating Parameters:

- Pressure up to 8 Bar
- Temperatures up to 150°C



DIMENSIONS (mm)			
Tube OD	Ø Da	Ø Db	L1
3/8"	7.75	50	90
1/2"	9.40	50	90
3/4"	15.75	65	90
1"	22.10	70	105
1-1/2"	34.80	82	105
2"	47.50	100	140
2-1/2"	60.30	125	151
3"	71.90	135	181
4"	97.40	155	206
6"	148.20	215	254
8"	199.00	265	302