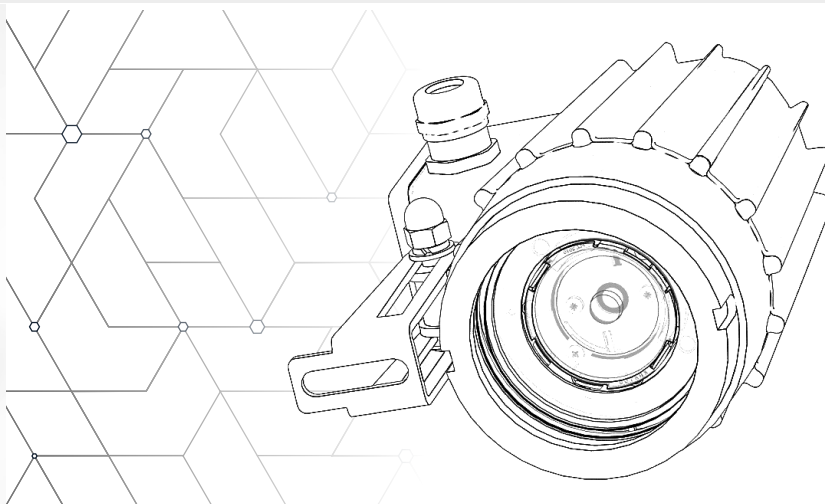
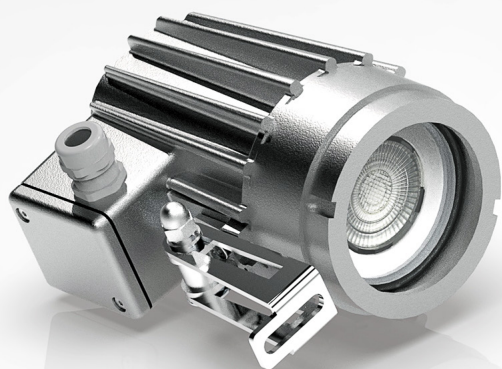


Lumistar Luminaire USL 06LED

The versatile sight glass luminaire



APPLICATION:

This extremely versatile, dust- and waterjet-proof Lumistar version was specially developed for use in industrial areas. It is perfect for the optimal illumination of closed vessels, boilers, tanks, silos, agitators and reactors.

The universally usable Lumistar USL 06LED sight glass luminaire is ideally suited for combining sight glass and light glass (1-flange version) as well as for their separate arrangement (2-flange version).

Suitable for circular sight glass fittings according to DIN 28120/DIN 28121 or similar as well as for screwed sight glass fittings similar to DIN 11851.

OPERATION VARIANTS:

- Continuous operation and push-button mode
- External push button/timer is available separately

SIZE:

Total length: 167 mm
Diameter: 110 mm

PROTECTION CLASS:

IP 65 and 67 according to EN 60 529/DIN VDE 0470 Part1

TECHNICAL DATA:

- Operating voltage: 24 V AC/DC, 220-240 V AC
- Ambient temperature: -20°C to +50°C

MECHANICAL DATA:

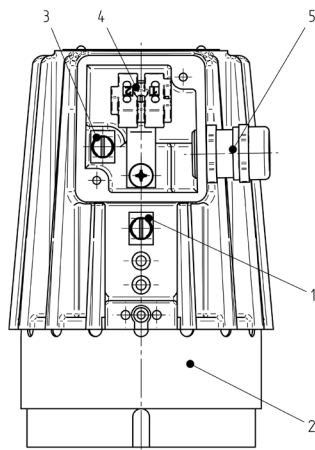
- Luminaire housing: Aluminium
- Luminaire head: Aluminium
- Mounting parts: Mounting bracket or adapter flange stainless steel 1.4301

TECHNICAL LIGHTING DATA:

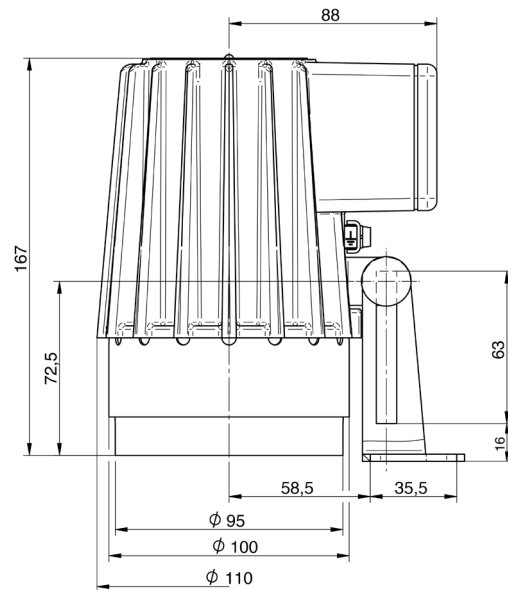
- Lightcolour:
24 V: 6500 K
220-240 V: 4000 K
- Luminous flux:
24 V: 450-500 lm
220-240 V: 400 lm
- Beam angle: 12°, 25° or 38°

Nominal voltage	Nominal power	Luminous flux	Light color*	Beam angle	Part no.
24 V AC/DC	14 W	450-500 lm	6500 K cold white	12°	3542.270.00
24 V AC/DC	14 W	450-500 lm	6500 K cold white	25°	3542.271.00
24 V AC/DC	14 W	450-500 lm	6500 K cold white	38°	3542.272.00
220-240 V AC	7 W	400 lm	4000 K neutral white	25°	3542.295.00

*other light colors on request



- 1 Protective conductor terminal outside
- 2 Screwed sight glass
- 3 Internal protective conductor terminal
- 4 Connection terminal
- 5 Cable gland M20 x 1.5



FIXING:

Fastening takes place via mounting bracket or adapter flange.

ELECTRICAL CONNECTION:

- Cable gland on the right
- Cable length variable
- Clamping range of the cable gland:
6-13 mm

NOMINAL WIDTHS:

For circular sight glass fittings similar to
DIN 28120: fixing on cover flange from DN 50

For circular sight glass fittings similar to
DIN 28121: fixing on cover flange from DN 80

For screwed sight glass fittings similar to
DIN 11851: mounting on the cover nut
DN 65, 80, 100: via adapter flange
DN 80, 100, 125, 150: via mounting bracket

WEIGHT:

2.1 kg including connection box

Materials

Luminaire body	Aluminium
Glass	Borosilicate
Mounting parts	Stainless steel
Flat gasket terminal box	Viton

Additional equipment

Part no.

Luminaire fixing mounting bracket, stainless steel	0354.016.00
Luminaire fixing adapter flange, stainless steel	1356.015.00
Assembly spanner for screwed sight glass	6805.001.00

Order specifications (example):

Part no. 3542.270.00: Lumistar luminaire USL 06LED,
24 V AC/DC, 14 W

Part no. 1356.015.00: Luminaire adapter flange