

Lumiglas Spray Device

3755.173 b

- for circular circular sight glass fittings to DIN 28120 and similar

- **Installation:**

Pressure tight screwed gland nozzles, as supplied, pass through clearance hole in cover flange and tapped hole in base flange of sight glass assembly.

- **Application:**

For intermittent or continuous automatic cleaning of underside of sight port glass disc. Suitable for pressure and vacuum vessels subject to pressure test certification for all standard ratings and use in explosion hazardous as well as non hazardous areas.

- **Operating conditions:**

Correspond to sight glass fitting rating

- **Combination with other features:**

Can be combined simultaneously with Lumiglas luminaire and wiper. Care must, however, be taken that max. permissible operating temperature and resistance to temperature cycling for the relevant glass disc are considered.

- **Materials:**

All metallic contact parts are of stainless steel quality 1.4571.
Seals: PTFE

- **Scope of delivery:**

Spray jet head, locknut, two seals, connecting nozzle 10 mm OD x 1.5 mm bore with hexagon shank and fitting instructions

- **Mounting:**

When supplied as part of a complete sight glass assembly, the flanges are ready drilled and tapped to suit at the Lumiglas suppliers works.

Depending on operating requirements, the spray feed line may require a non return valve.

- **Parts and materials** referred to in adjoining diagram:

item	part	material
1	connecting nozzle	stainless steel, part no. 1.4571
2	seals	PTFE
3	locknut	stainless steel A4
4	spray head	stainless steel, part no. 1.4571

- **Dimensions:**

The spray device fits all standard sizes of sight glass assembly. Depending on application, two or more units may be fitted.

- **Ordering information:**

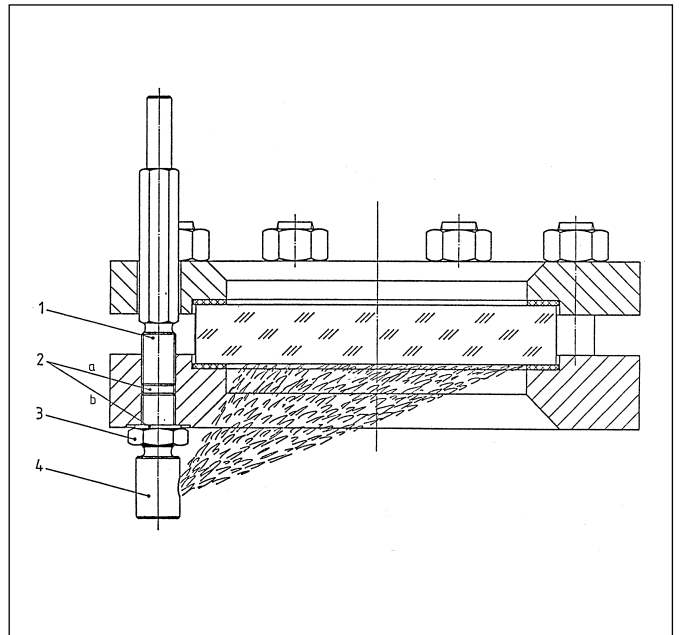
Lumiglas spray device, part no. 1.1098.005.91

If ordering in combination with complete sight glass assembly, please indicate type of fitting and intended form of installation:

1. sight glass fitting (DN/PN), materials
2. dimensions and type of sight glass disc (borosilicate/sodalime glass)



Lumiglas spray device



Lumiglas spray device installed in a sight glass assembly DIN 28120

All dimensions in mm unless stated otherwise. Subject to change without prior notice. 09.15