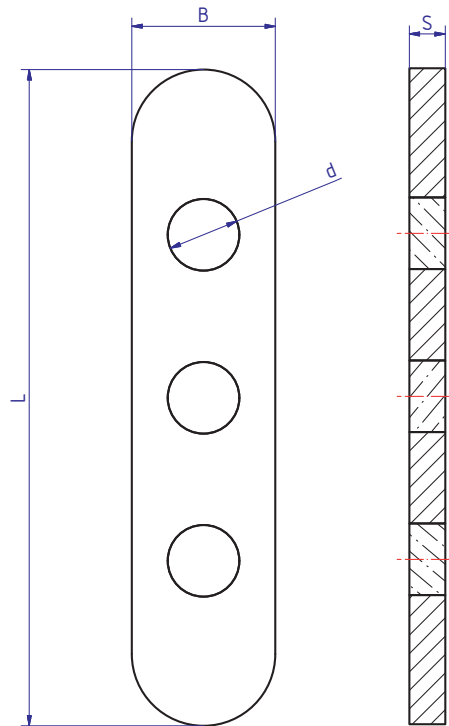
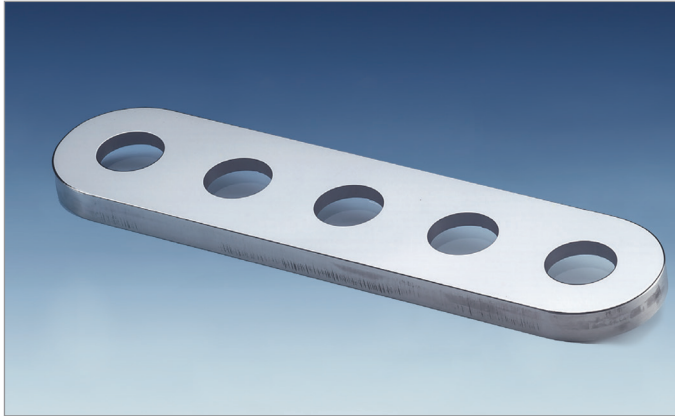


Type 99.LSG

METAGLAS® Fused metal elongated Sight glass



Applications

- To replace conventional glass in rectangular and D-Ended Sight glass assemblies

Advantages

- No catastrophic failure
- Extremely long life & reliability
- High resistance to impact & pressure
- Simple & safe installation
- Constructive solution

Operating conditions

- Pressure: -1 to 40 bar, higher pressures possible
- Temperature: -60°C to 300°C, depending on material

Ring materials

- Duplex stainless steel (1.4462)
- Hastelloy C-22 (2.4602)
- Hastelloy C-4 (2.4610)

Technical data Manufactured and tested to:

- Directive for pressure equipment 2014/68/EU, Module H (DIN/EN/ISO 9001)
- AD2000 Standards W0/TRD 100
- Sight glass fused to metal conforming to DIN 7079
- Materials to VdTÜV specifications and the DIN/EN designated standards
- Glass: Borosilicate to DIN 7080 / DIN 7079

Materials

- 1.4462, 2.4602 u.a.

Material certificate

- Certificate of Conformity to EN 10204-3.1 or 3.2 for extra costs

Dimensions

See table for standard dimensions

Alternative dimensions available to customer specification

Nominal size

| Nominal size | L | B | S | Glass | |
|--------------|-----|----|------|-------|--------|
| | | | | d | Anzahl |
| 1 | 115 | 34 | 17,5 | 16 | 4 |
| 2 | 140 | 34 | 17,5 | 16 | 4 |
| 3 | 165 | 34 | 17,5 | 16 | 5 |
| 4 | 190 | 34 | 17,5 | 16 | 6 |
| 5 | 220 | 34 | 17,5 | 16 | 7 |
| 6 | 250 | 34 | 17,5 | 16 | 8 |
| 7 | 280 | 34 | 17,5 | 16 | 9 |
| 8 | 320 | 34 | 17,5 | 16 | 10 |
| 9 | 340 | 34 | 17,5 | 16 | 11 |