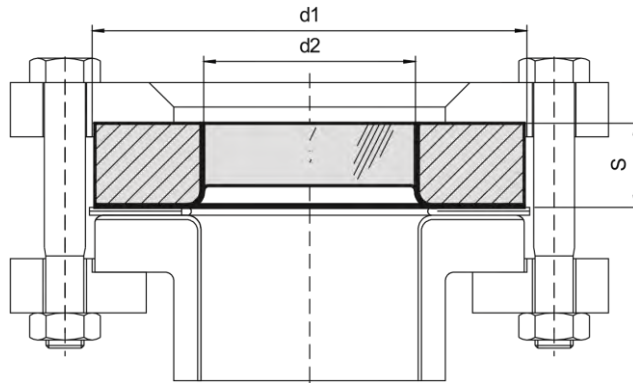
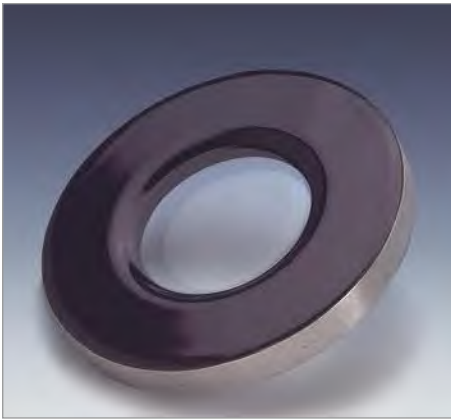


Type 275

METAGLAS® Lined Sight Glass



Applications

- Glass lined vessels
- Sight glass fittings to DIN 28121
- Through flow sight glasses to DIN 3236, DIN 3237

Advantages

- Glass lined Metaglas sight glasses combine the security of failsafe fused glass with the excellent characteristics of a glass surface.

Advantages of glass lining:

- The product will only come into contact with polished glass
- Highly resistant to corrosive processes
- Inert surface so cannot adversely affect product purity
- No catalyst effect and no infection
- Resists build up of sticky products which gives:
Better heat transfer & higher productivity

Technical data

Manufactured and tested to:

- Directive for pressure equipment 2014/68/EU, Module H (DIN/EN/ISO 9001)
- AD2000 Standards W0/TRD 100
- Sight glass fused to metal similar to DIN 7079
- Materials to VdTÜV-specifications and the DIN/EN designated standard

Safety

- Leaktight with very high pressure resistance
- High safety factor
- Shatterproof with reliability against total failure. The possibility of unexpected rupture is excluded
- High resistance to bending and overtightening offers simple, fast installation with no risk of breakage
- Remains leak tight even when glass is damaged

Ring material

- P 265 GH (1.0425) EN 10028-2
- Sight Glass: B270
- Enamel DD 3009 blue or white

Approvals

- TÜV-Approval in accordance with governing standards (for pressure vessels)

Operating temperature:

- -60°C to 250°C

Nominal size		Maximum Pressure -1/10 bar			Maximum Pressure -1/16 bar		
DN	ANSI	d1	d2	S	d1	d2	S
50	–	102	50	20	102	50	20
–	–	127	75	23	127	75	28
80	3"	137	80	25	137	80	30
100	–	158	95	30	158	95	33
150	–	214	130	35	214	130	40
200	–	269	150	40	269	150	45