

# Monitoring of bursting disc/ Transmitter

## Type transmitter with inductive proximity switch

We also offer our bursting discs with a monitoring system to allow for automated monitoring of ongoing processes. This safety device accurately and immediately detects the response of a bursting disc within a plant or tank. This allows for countermeasures to be taken instantly.

### Benefits

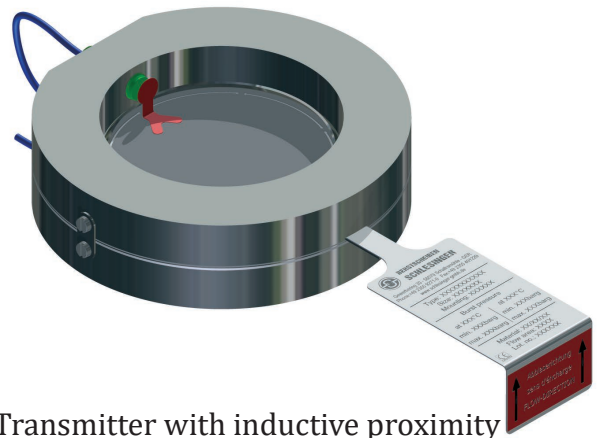
- Reliable and immediate signalling when the bursting disc bursts
- Suitable for explosion-protected areas
- Proximity switch remains undamaged after bursting, thus reducing repair costs

### Description

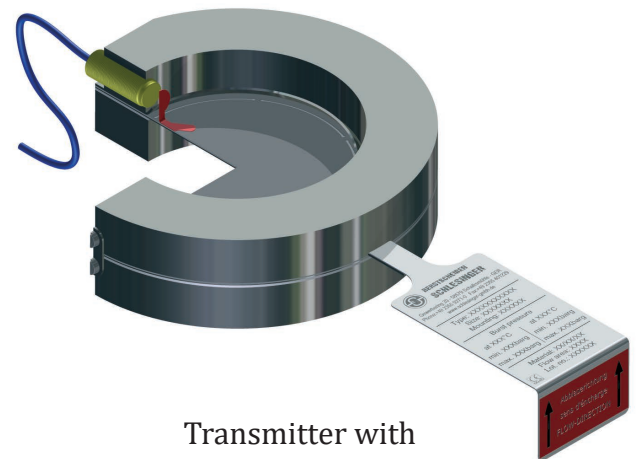
This signal transmitter consists of a sensor, the proximity switch and, at the customer's request, an additional isolating switch amplifier.

The inductive proximity switch is mounted at a distance of two to four millimetres to a metal lug that is fastened to the bursting disc. When the bursting disc opens in the event of a failure, the signal transmitter registers that the lug has changed its position.

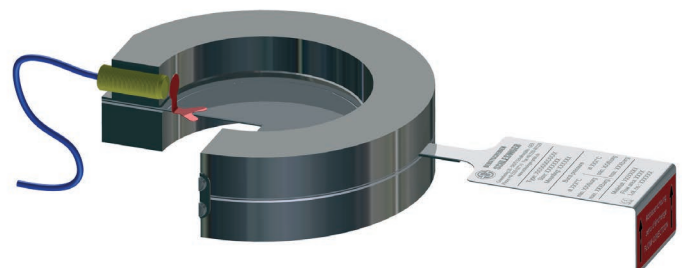
**After bursting, only the bursting disc needs to be exchanged, while the proximity switch remains undamaged.**



Transmitter with inductive proximity switch in holder with composite bursting disc



Transmitter with inductive proximity switch



Transmitter with inductive proximity switch

## Installation

The transmitter with inductive proximity switch is mounted in a holder that is in turn clamped between flanges.

## Function

The signal transmitter with inductive proximity switch is primarily used in explosion-protected systems and containers with operating temperatures up to 150 degrees centigrade.

## Technical data

### General remarks

Can be combined with the following bursting discs types:	composite bursting discs, reverse buckling bursting discs, rupture discs
Media	gas, steam, liquid
Temperature range	-40°C to +150°C

### Mechanical specifications

Type of connection	2 m, PVC cable
Housing material	stainless steel, PBT
Wire cross-section	0,34 mm <sup>2</sup>

### Voltage/current

Nominal voltage	8 V
Switching frequency	0 - 1500 Hz

### Certifications

CE marking according to Directive 2014/68 EU

QM-system according to ISO 9001:2015

### Bursting pressure

The signal transmitter does not have an additional, inherent bursting pressure. The bursting pressure is determined by the respective bursting disc.