

•

5

"

"

"

"

20

AR



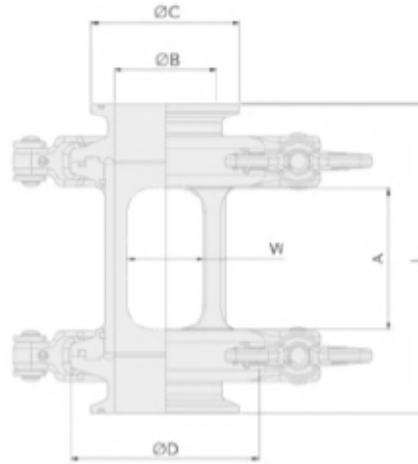
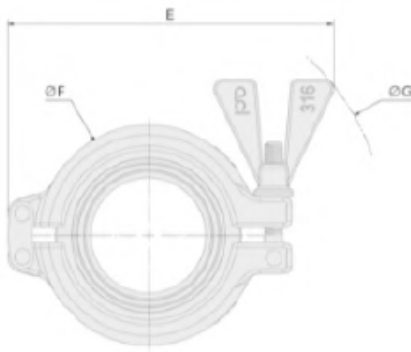
●

 \hat{M} \mathbb{W} \mathbb{W}

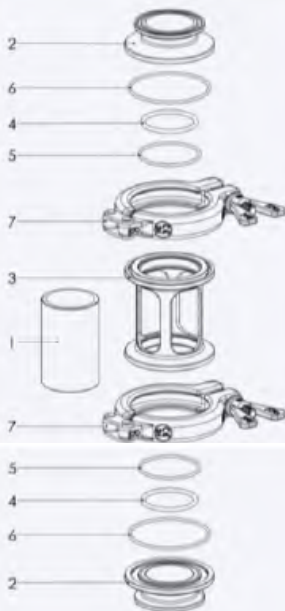
A



NOMINAL SIZE (INCHES)	WINDOW A X W	ID ØB	MATING FLANGE ØC	INTEGRAL FLANGE ØD	LENGTH L	WIDTH E	MINOR OD ØF	MAJOR OD ØG	INTEGRAL CLAMP SIZE	WORKING PRESSURE (BAR)	MASS (KG)	NUMBER OF WINDOWS
1/2	24 x 8	9.40	25.0	34.0	76.0	85.0	46.3	136.0	DIN10	20.0	0.58	4
3/4	29 x 13	15.75	25.0	50.5	87.0	102.0	62.2	134.0	1" - 1.5"	17.5	0.90	4
1	34 x 16	22.10	50.5	50.5	90.0	102.0	62.2	154.0	1" - 1.5"	6.5	1.01	4
1 1/2	48 x 26	34.80	50.5	64.0	105.0	123.0	77.7	186.0	2"	8.0	1.19	4
2	55 x 36	47.50	64.0	77.5	120.0	140.0	91.2	200.0	2.5"	7.0	1.53	4
2 1/2	72 x 33	60.20	77.5	91.0	151.0	150.0	104.7	212.0	3"	6.5	1.90	6
3	108 x 36	72.90	91.0	106.0	175.0	165.0	119.7	226.0	3.5"	6.5	2.51	6
4	132 x 48	97.38	119.0	130.0	200.0	191.0	143.7	256.0	4.5"	4.0	3.47	6



Exploded View

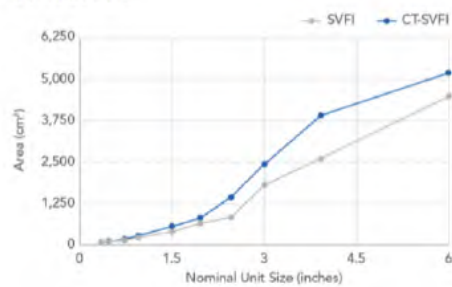


1. Glass
2. Flange Ends
3. Body
4. Sealing O-Rings
5. Cushion O-Rings
6. Clamp O-Rings
7. ACL Clamps

Bill of Materials

ITEM	QUANTITY	DESCRIPTION	MATERIAL	AVAILABLE OPTIONS
1	1	Glass	Borosilicate 3.3	-
2	2	Flange ends	AISI 316L	C22 / AL6XN
3	1	Body	AISI 316L	C22 / AL6XN
4	2	Sealing O-Rings	EPDM	FEP / VITON / PC-SIL
5	2	Cushion O-Rings	EPDM	FEP / VITON / PC-SIL
6	2	Clamp O-Rings	EPDM	FEP / VITON / PC-SIL
7	2	ACL clamps	CF8M / CF8	-

Viewing Window Area - SVFI v CT-SVFI



The CT-SVFI has been designed to ensure the largest viewing area possible whilst maintaining the mechanical integrity of the component.

Seal Layout



Materials used in the fabrication of the CT-SVFI are European sourced and conform to AD2000 W2 and PED, ensuring the highest level of reliability and safety.