

# Custom Sight Glasses and Flow Indicators

Data sheet 10.19

## Application:

Custom built sight glasses are uniquely designed to suit your application.

## General:

Designs are based on information supplied by our customers and pre-existing Visilume models. Installation for most sight glasses would consist of either welding, bolting to a base flange or setting in concrete.

## Advantages:

Complete & fully operational assembly ready for installation. Designs are tailored to suit specific applications. Rugged and enduring construction.

## Operating conditions:

For a wide range of pressures and temperatures which are dictated by the viewing diameter, material specification and environment.

## Certification, Documentation and Testing:

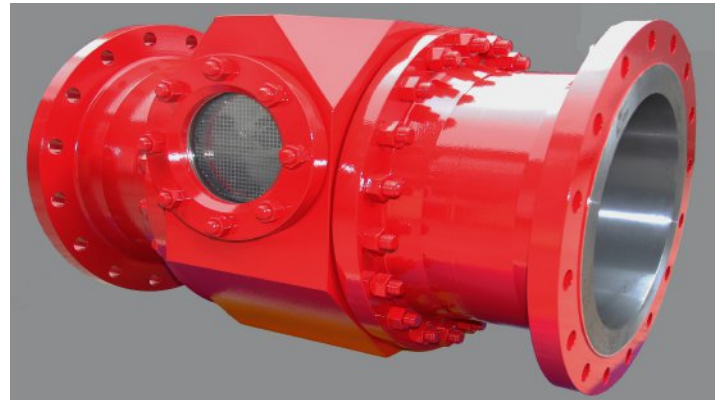
All contact metalwork will be supplied with material test certification to EN10204 3.1 or other as requested. Hydro-static pressure testing. Non-destructive testing is also available. Letter of Conformity for all components. General arrangement drawings.

## Optional:

Wipers and Spray devices are available to maintain visibility. Wiper assemblies with Peek (Polyetheretherketon) components for use in digester environments. Wide range of compatible light fittings.

## Materials:

Special materials such as Hastelloy, Super Duplex, Titanium and Aluminium can be offered alongside the usual 304L or 316L Stainless steels and Carbon steel. Glass and gaskets will be supplied to suit application or your request. Special surface finishes and linings are also available. Different coatings available to required RAL specification.



16" ANSI 150 Sight port with stainless steel spinners/vacuum supports with DIN 28120 150mm viewing windows.



Special 6" ANSI 150 DIN 28121 with integrated spray ring and purge flange.



Special 600mm Hinged Manway assembly, ready for wiper installation



ISO 9001  
Quality