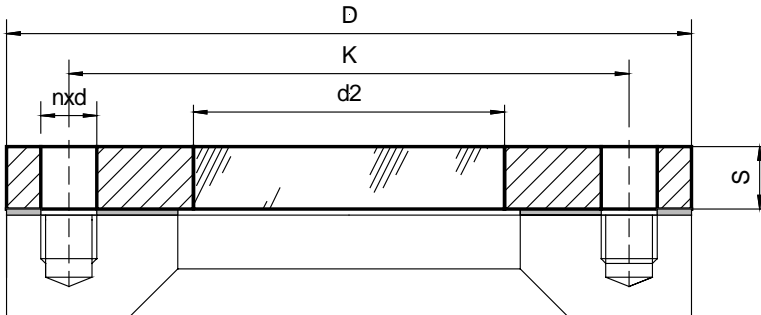


Metaglas Sight Glass Flange – Connection to DIN 2501
Type 11

VM17.01



For:

- Flat faced mating flange

Advantages:

- Reliability against total failure. The possibility of unexpected rupture is excluded
- Long working life
- Smooth easy clean surface
- Maximum viewing
- Minimum buildheight

Approvals:

TÜV-Approval in accordance with governing standards (for pressure vessels) (PN6 to PN40; with Carbon Steel (DIN1.0570) or Duplex Stainless Steel (DIN1.4462))

Technical Data:

Manufactured and Tested to:

- Directive for pressure equipment 97/23/EG 02/98 Module H/H1 (DIN/EN/ISO 9001)
- AD Standards W0/TRD 100
- Sight glass fused to metal conforming to DIN 7079
- Materials to Vd TÜV specifications and the DIN/EN designated standard
- Glass: Borosilicate to DIN 7080

Material Certificate:

Certificate of conformity to EN 10204-3.1B (or 3.1A at extra cost)

Important:

Requires parallel flat face mounting flange and full gasket

Ring Material	Operating Temperature
Carbon Steel (1.0570)	-10°C to +300°C
Duplex Stainless Steel (1.4462)	-30°C to +280°C
Hastelloy C-22 (2.4602)	-60°C to +300°C
Hastelloy C-4 (2.4610)	-60°C to +300°C

PN6

Flange				Glass	Mounting holes			Gasket
NW	D	K	S	d2	n	Thread	d	
40	130	100	14	40	4	M12	14	130x70x2
50	140	110	14	50	4	M12	14	140x85x2
65	160	130	14	70	4	M12	14	160x100x2
80	190	150	16	80	4	M16	18	190x110x2
100	210	170	16	100	4	M16	18	210x130x2
125	240	200	18	125	8	M16	18	240x160x2
150	265	225	20	140	8	M16	18	265x185x2
200	320	280	20	160	8	M16	18	320x240x2

Continued on next side

PN10

Sightglass Flange with connection to DIN 2501

Flange				Glass	Mounting holes			Gasket
NW	D	K	S	d2	n	Thread	d	
40	150	110	16	40	4	M16	18	150x70x2
50	165	125	18	50	4	M16	18	165x85x2
65	185	145	18	70	4	M16	18	185x105x2
80	200	160	20	80	8	M16	18	200x120x2
100	220	180	20	100	8	M16	18	220x140x2
125	250	210	22	125	8	M16	18	250x170x2
150	285	240	22	140	8	M20	22	285x195x2
200	340	295	25	160	8	M20	22	340x250x2

PN16

Flange				Glass	Mounting holes			Gasket
NW	D	K	S	d2	n	Thread	d	
40	150	110	16	40	4	M16	18	150x70x2
50	165	125	18	50	4	M16	18	165x85x2
65	185	145	18	70	4	M16	18	185x105x2
80	200	160	20	80	8	M16	18	200x120x2
100	220	180	20	100	8	M16	18	220x140x2
125	250	210	22	125	8	M16	18	250x170x2
150	285	240	25	140	8	M20	22	285x195x2
200	340	295	30	160	12	M20	22	340x250x2

PN25

Flange				Glass	Mounting holes			Gasket
NW	D	K	S	d2	n	Thread	d	
40	150	110	18	40	4	M16	18	150x70x2
50	165	125	20	50	4	M16	18	165x85x2
65	185	145	22	70	8	M16	18	185x105x2
80	200	160	24	80	8	M16	18	200x120x2
100	235	190	24	100	8	M20	22	235x145x2
125	270	220	26	125	8	M24	26	270x170x2
150	300	250	30	125	8	M24	26	300x200x2

PN40

Flange				Glass	Mounting holes			Gasket
NW	D	K	S	d2	n	Thread	d	
65	185	145	22	70	8	M16	18	185x105x2
80	200	160	24	70	8	M16	18	200x120x2
100	235	190	25	80	8	M20	22	235x145x2
125	270	220	32	100	8	M24	26	270x170x2
150	300	250	35	125	8	M24	26	300x200x2

PN64

Flange				Glass	Mounting holes			Gasket
NW	D	K	S	d2	n	Thread	d	
65	205	160	28	65	8	M20	22	205x70x2
80	215	170	30	70	8	M20	22	215x80x2
100	250	200	32	80	8	M24	26	250x100x2
125	295	240	40	100	8	M27	30	295x125x2

PN100

Flange				Glass	Mounting holes			Gasket
NW	D	K	S	d2	n	Thread	d	
65	220	170	30	60	8	M24	26	220x70x2
80	230	180	35	70	8	M24	26	230x80x2
100	265	210	40	80	8	M27	30	265x100x2
125	315	250	42	90	8	M30	33	315x125x2