

## Lumiglas Luminaires Series Lumistar

DATA SHEET 06.01

### for use on circular sightglass fittings.

For the combination of sightglass and lightglass-suitable for circular sightglass fittings to DIN 28120 and similar, DN 50 to DN 200.

### Application:

For illumination of internals of Pressure vessels, tanks, bunkers, silos, stirred vessels and other normally enclosed containers in **non explosion hazardous areas**. Suitable for use in food processings.

### Protection:

When correctly fitted, dust and water jet tight to IP 65 and EN 60 529/DIN VDE 0470 part 1.

### Operating Conditions:

Independent of internal vessel pressure/vacuum; max. permissible ambient temperature measured at cable entry gland 80° C. Where ambient temp. > 40° C, heat resistant cable e.g. type 4GMH4G-J3 x 1,5 mm<sup>2</sup> must be fitted.

### Electrical data:

Power supply: 24 V  
Lamp: 2-pin Halogen filament lamp  
Power: depending on size of unit, 20 W, 50 W or 100 W

**Lamp holder:** 2-pin socket

**Transformers:** Can be supplied as special accessory.

### Integral switch for brief ON mode:

Not maintained push button switch fitted as standard.

### Mechanical installation:

- Before commencing installation please read information sheet "Important guidelines for mounting sightglass fittings..."
- The luminaire is attached to the cover flange of the circular sight glass unit by two or four bolts. A ring gasket with bridge provides the seal between luminaire and sightglass disc.
- The fixing bolts (material zinc coated steel 8.8) are part of the supply.
- Against additional cost, the Lumistar luminaire can be supplied complete with connecting cable.

### Electrical connection:

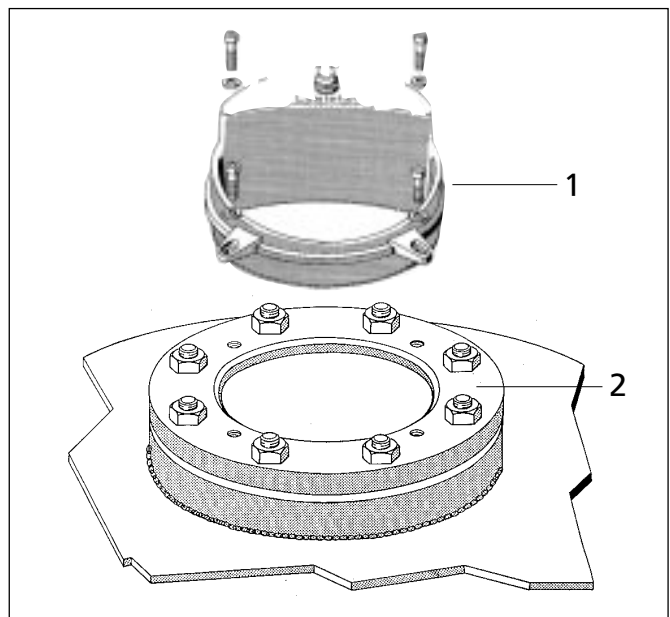
- Select connecting cable to suit operating conditions.
- Cable diameter to suit cable entry gland (M16 x 1,5).
- Remove reflector.
- Bare cable core ends.
- Pass cable through gland into lamp chamber and connect to terminals (max. 2,5 mm<sup>2</sup>).
- Tighten cable entry gland.
- Fit separately packed lamp using protective cloth.
- Replace reflector.

### Lamp exchange:

- Caution: check luminaire temperature before commencing.
- Ensure power to luminaire switched off.
- Remove luminaire from cover flange.
- Remove reflector and pull out lamp.
- Fit new lamp by holding it with protective cloth and carefully locating into 2-pin socket and push home.
- Replace reflector, checking for cleanliness.
- Check condition of bridge gasket and replace if necessary.
- Set luminaire on cover flange and bolt tight.
- Switch power on.



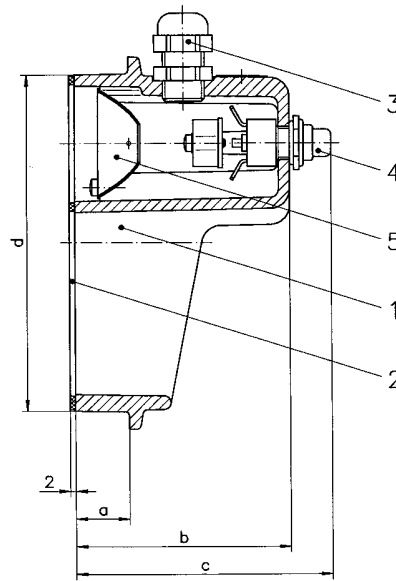
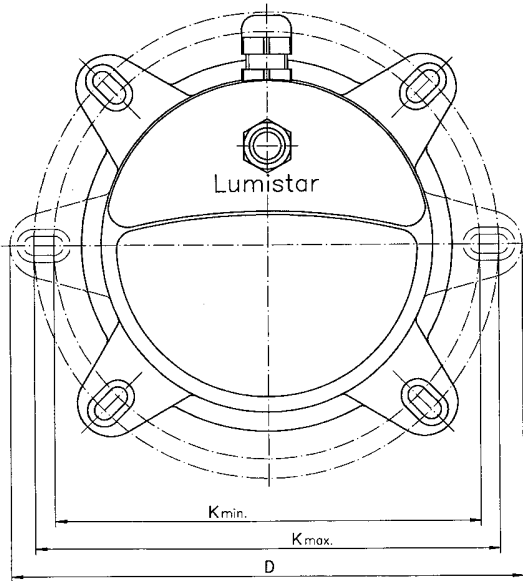
A complete unit, as supplied, of the Lumistar series



Sight- and lightglass are combined

- (1) Lumiglas luminaire series Lumistar, with fixing screws.
- (2) Sightglass fitting DIN 28120 welded into vessel wall.

## Dimensions and connecting data for Lumiglas luminaires series Lumistar



- item 1 Luminaire body
- 2 Bridge gasket
- 3 Cable entry gland
- 4 Push button with dust cap
- 5 Reflector

### Parts, construction and materials:

Luminaire body: Corrosion resistant die cast aluminium  
Paint finish: RAL 9007

Size		1	2	3*	4*	5*	6*
Lumistar model (= viewing dia.)		<b>Lumistar 80</b>	<b>Lumistar 100</b>	<b>Lumistar 125</b>	<b>Lumistar 150</b>	<b>Lumistar 175</b>	<b>Lumistar 225</b>
Matches sightglass fitting to DIN 28120	DN	50	80	100	125	150	200
Op. voltage	V	24	24	24	24	24	24
Power	W	20	50	50 or 100	50 or 100	50 or 100	50 or 100
Bolt pitch circle Ø	K min.	104	126	155	180	208	258
	K max.	118	140	169	194	222	282
	D	135	157	186	211	243	303
	d	77	97	122	147	172	222
	a	13	17	19	22	27	32
	b	65	75	77	80	85	95
	c	80	90	92	95	100	110
Fastening lugs hole qty/size	oval hole	2 P.: 14 x 7	2 P.: 14 x 7	4 P.: 14 x 7	4 P.: 14 x 7	4 P.: 16 x 9	4 P.: 21 x 9
Bolts		M 6 x 16	M 6 x 16	M 6 x 16	M 6 x 16	M 8 x 16	M 8 x 16
Weight appx.	kg	0,300	0,450	0,550	0,650	0,800	1,400

\* Can be combined with glass wiper model SW1.

### Ordering Information: e.g.

Lumiglas luminaire model Lumistar 125, 24 V/100 W.

The appropriate lamp, corresponding to the required power, is separately packed as part of the supply. Hence the importance of stating desired lamp power; in absence of such information, a lamp considered correct for the specified luminaire model will be sent.

RD 2x1000/09.01 3755.158

All dimensions in mm unless stated otherwise. Subject to change without prior notice.